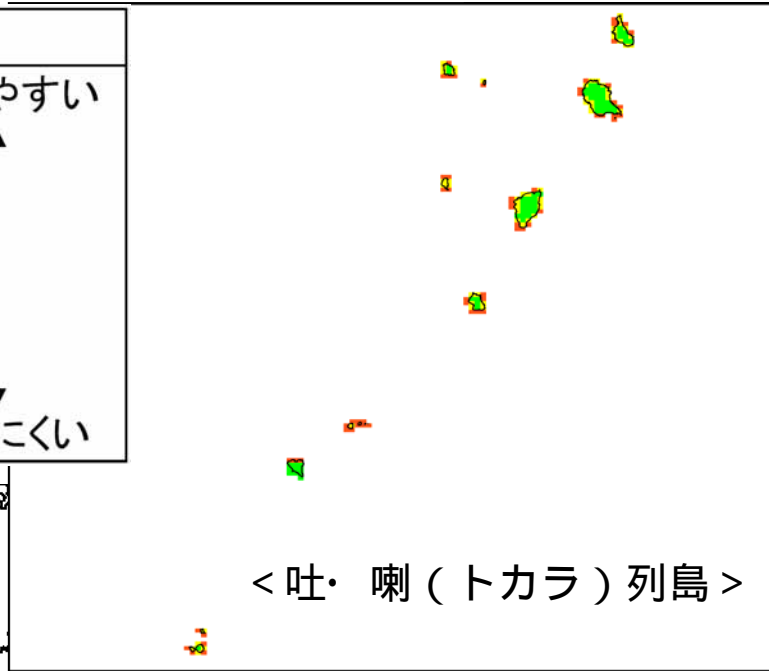
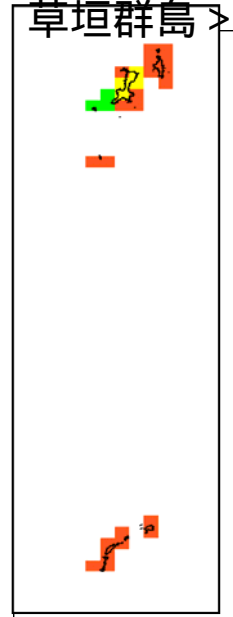
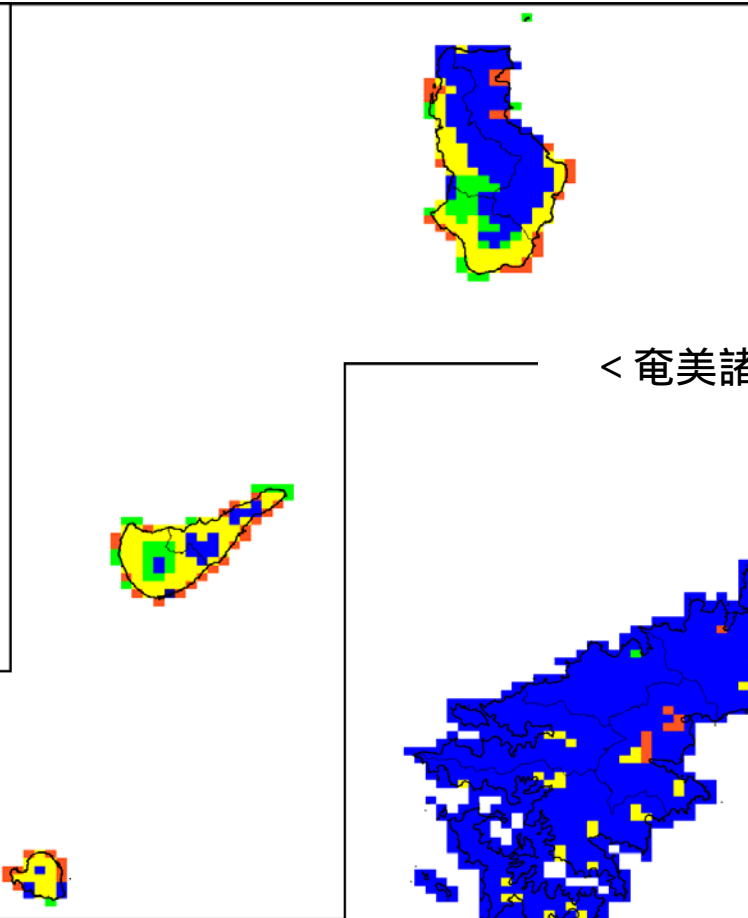


計測震度増分	色	
1.0 ~ 1.65	赤	ゆれやすい ↑ ↓ ゆれにくい
0.8 ~ 1.0	赤	
0.6 ~ 0.8	黄	
0.4 ~ 0.6	緑	
0.2 ~ 0.4	青	
0.0 ~ 0.2	青	
-0.95 ~ 0.0	黒	ゆれにくい

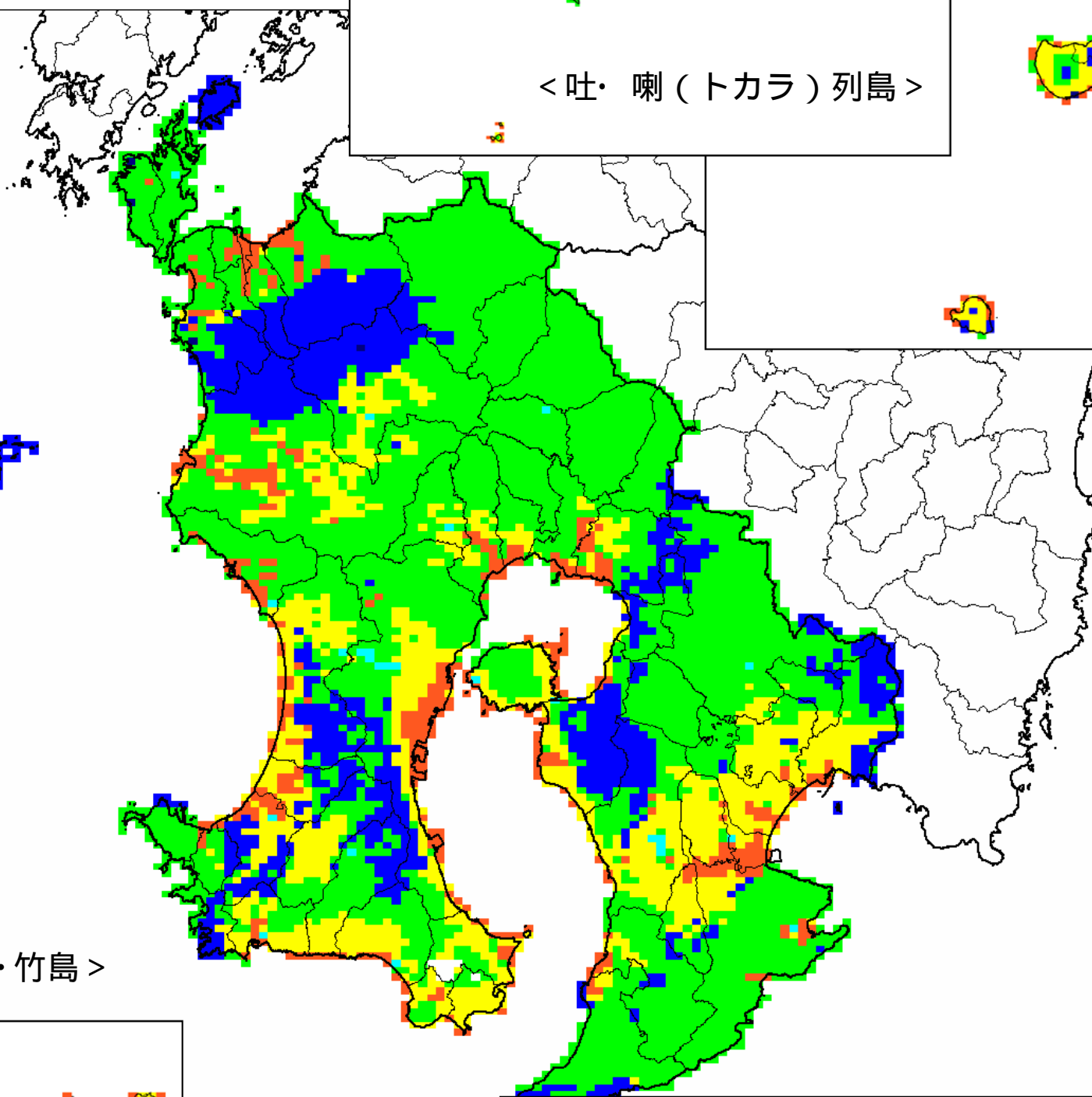
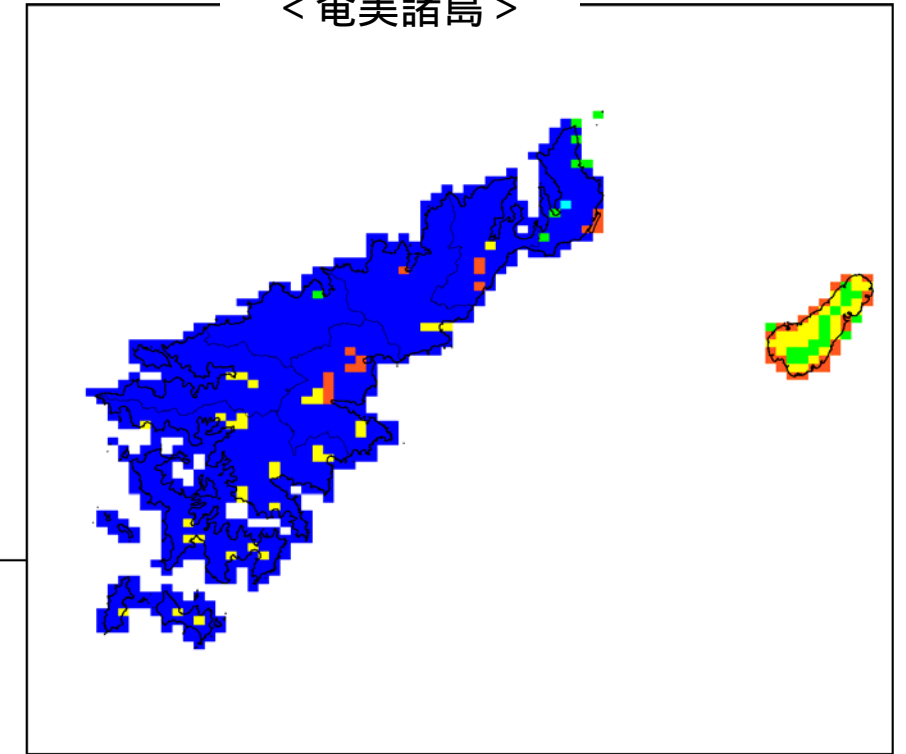
<宇治・草垣群島>



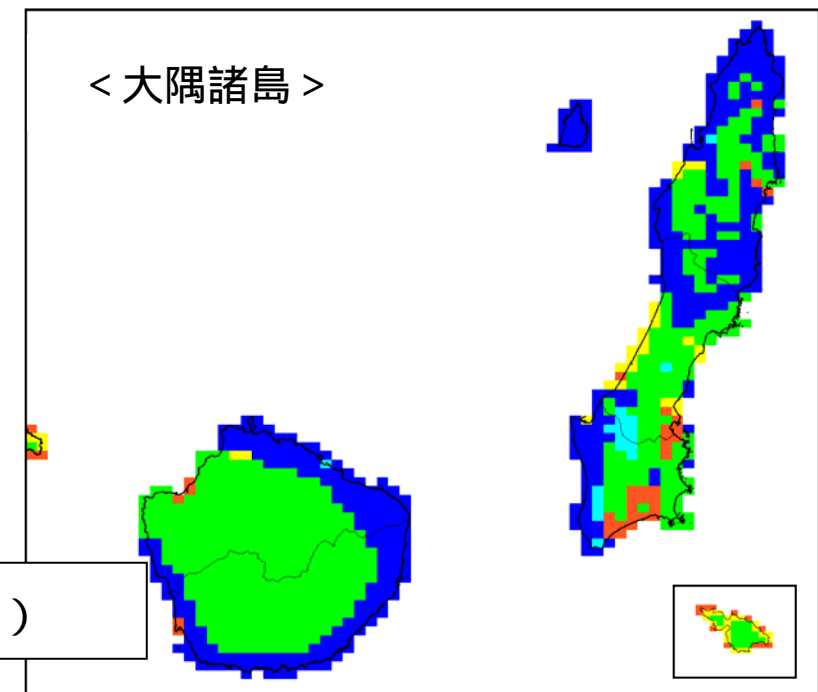
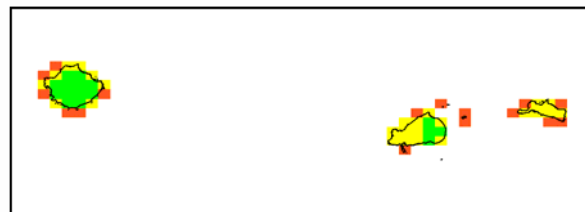
<吐・喇(トカラ)列島>



<奄美諸島>



<黒島・硫黄島・竹島>



<大隅諸島>

図 表層地盤のゆれやすさ(鹿児島県)